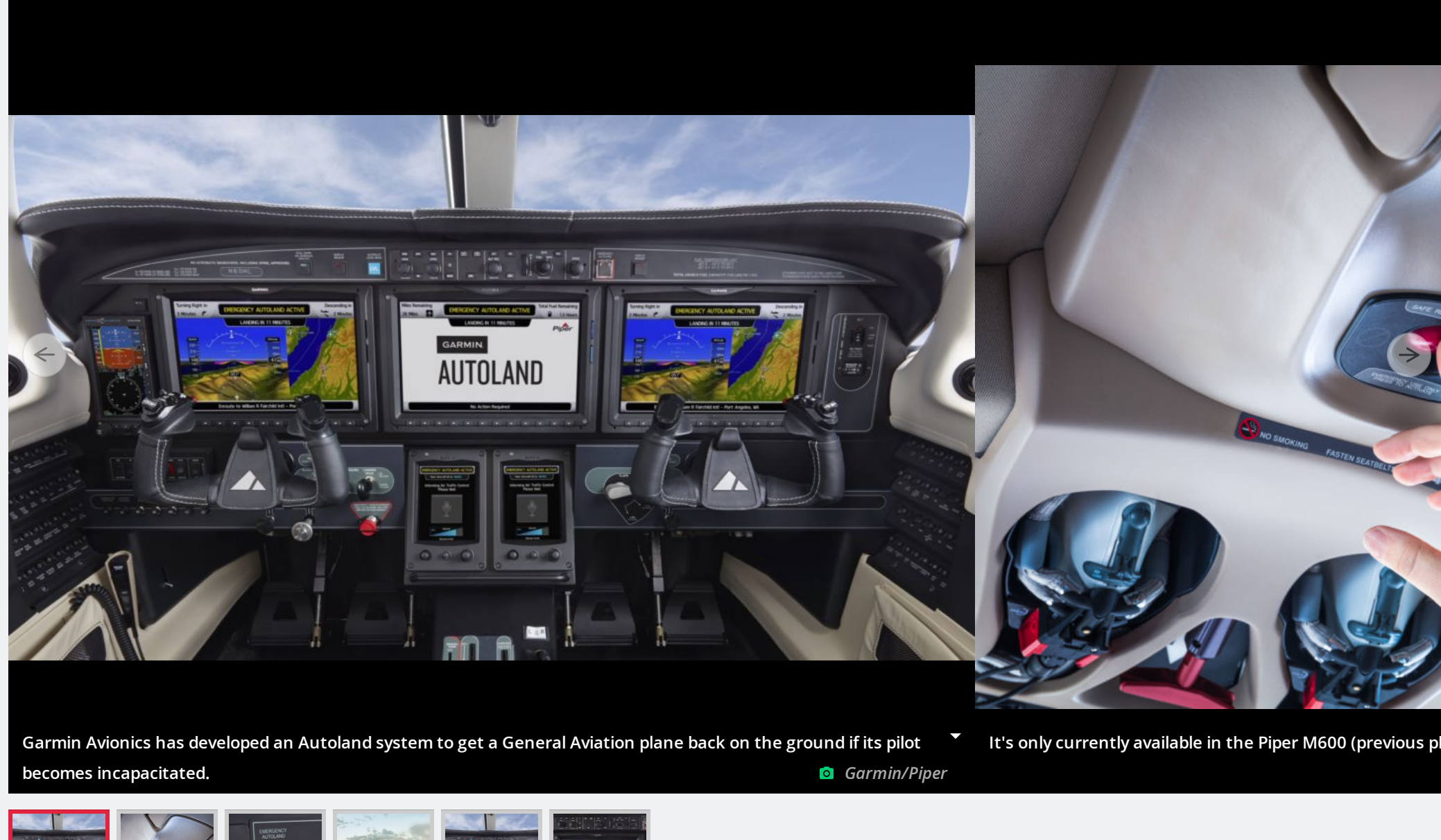


PRESS THE BIG RED BUTTON —

This system from Garmin can land a private plane when your pilot can't

Unfortunately it's only available for two GA aircraft, and neither is exactly cheap.

ERIC TEGLER - 11/13/2019, 1:53 PM



If you've been around long enough, you've probably heard stories of passengers who successfully landed small planes after their pilots fell ill or died. It happened in Australia just a few months ago (Aug. 31) when a student on his first flight lesson in Perth was forced to land a Cessna 150 after his instructor lost consciousness.

The student had never landed anything previously, but it worked. However, it usually doesn't, and the consequences are disastrous. That's why electronics/avionics maker Garmin is launching Autoland, an emergency autopilot system that can autonomously land a private aircraft and bring it to a stop on the runway.

Push the red button

Commercial airliners have long had auto-landing systems as well as the ability to fall back on co-pilots if the pilot-in-command becomes incapacitated. Until recently, single-pilot certified general aviation (GA) airplanes haven't had autonomous landing capability. To be clear, they still don't. Garmin's Autoland system is not yet FAA certified, though the company expects certification "soon."

Autoland is a new feature of Garmin's G3000 integrated flight deck, which already comes with 3-axis autopilot, auto-throttles, and automatic stability and descent capabilities. It will debut on two single-engine airplanes: Piper's M600 SLS turboprop and Cirrus Aircraft's Vision Jet. Priced at \$2.9 million and \$2.3 million, respectively, they admittedly stretch the definition of general aviation aircraft, but each is largely owner-flown.

If you're aboard one, and the owner-pilot succumbs to something, here's what happens:

Upon recognizing the pilot is in distress, a passenger can press the Autoland button. In the Cirrus it's a big red button on the ceiling between the pilot's seats and at top-center on the M600 instrument panel. The G3000 also monitors pilot activity/inactivity and cabin pressure and can automatically engage Autoland or Emergency Descent Mode if no activity is detected. (Recall the [Payne Stewart hypoxia-induced Lear 35 crash](#).)

The system audibly announces, "Emergency Autoland Activating." The airplane then declares an emergency with air traffic control via automated voice radio messages and sets the transponder to squawk 7700 (mayday signal).

Simultaneously, Autoland analyzes terrain, weather, and nearby airports to determine the optimal airport for landing given the specific aircraft's available fuel and performance characteristics, winds, runway length, and a host of other factors. As the airplane descends, Autoland controls speed, altitude and flight path and manages throttles, flaps, cabin pressurization, and more.

Air traffic controllers are informed of the system's landing destination choice and clear traffic as they would with a human-flown emergency. On final approach, Autoland lowers the gear, flares the airplane, and brings it to a stop with automatic braking. Audible instructions for exiting the airplane then play.

Throughout the evolution, passengers can be in voice contact with ATC, getting reassurance. And if the pilot comes to, they can override Autoland, turning everything off with another press of that button.

Easy to imagine, hard to do

"A lot of this was us trying to figure out what would make sense in this class of aircraft," says Garmin's aviation systems team leader, Ben Patel.

Work on the system accelerated four years ago as technology and the business case came together. Garmin's own development of its autopilot, auto-throttles, and other automated systems formed the building blocks for Autoland.

"These systems that we're using to enable it are things that have been in the field for years," Autoland Program Manager Bailey Scheel adds.

Autoland not only employs a sophisticated autopilot, it leverages special routing and destination-selection algorithms. The system is aware of all airports bypassed on a flight as well as those immediately proximate. It actually scores airports for optimal safe landing based on dynamic physical, environmental, and weighted OEM performance parameters.

Senior Software Engineer Eric Tran adds that Autoland routing borrows from Garmin's automotive autonomy side. "It can choose the best, safest airport for autonomous landing faster than any human pilot."

Garmin says that about 70% of airports in the US are suitable Autoland destinations. They simply need a GPS approach with vertical guidance.

On the other hand, Autoland requires an airplane with the latest version of the G3000 flight deck, with auto-throttles, auto-braking, radar altimeter, and more. The population of GA aircraft eligible is very small.

As of this writing, Piper has built about 10 Autoland-enabled M600 SLS. Cirrus has two Autoland-equipped Vision Jets. Fitting the system to your private piston-single or twin could be possible with considerable work but also prohibitively expensive. (Garmin declines to price Autoland.)

That's why Autoland will roll out exclusively on new aircraft for some time to come. Eventually Garmin will broaden the market. In the process, lives will be saved.

Listing image by Garmin/Piper

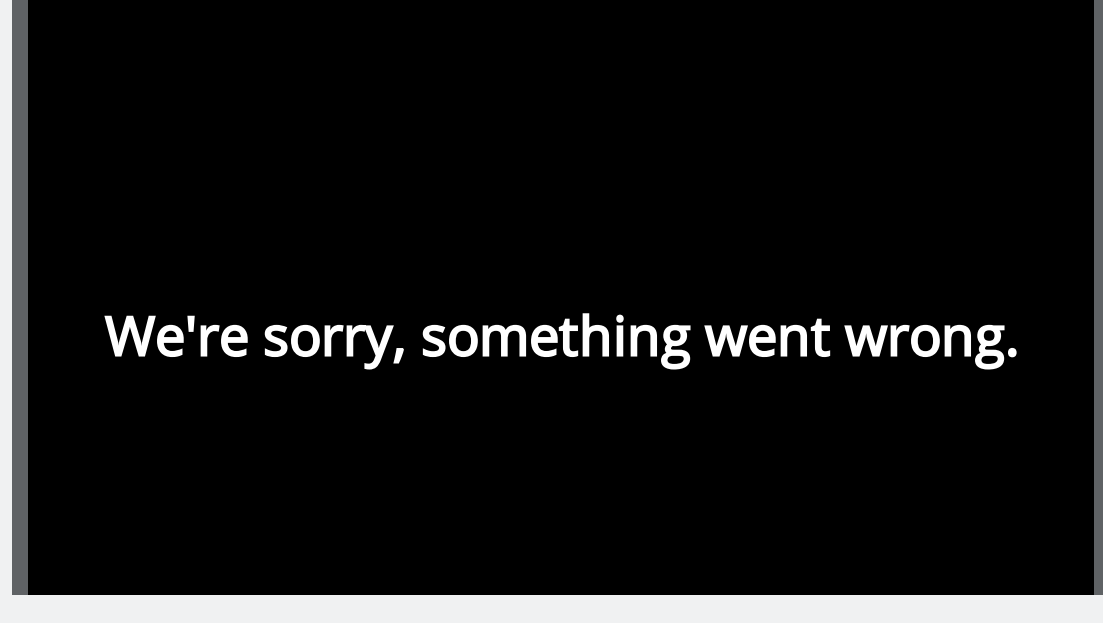
READER COMMENTS

137

SHARE THIS STORY

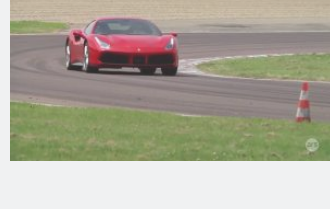


CHANNEL **ars**



The supercharged Ferrari 488 GTB | Ars Technica

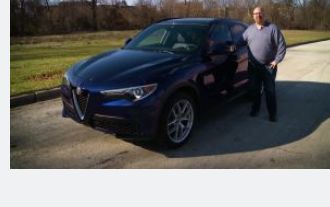
Ars Technica's Jonathan Gitlin drives the insanely fast Ferrari 488 GTB, which also feels nice to drive on normal roads at normal speeds.



The supercharged Ferrari 488 GTB | Ars Technica



Aston Martin's DB11 V12



Fast, fun, and freaky: A review of the Alfa Romeo Stelvio

More videos

← PREVIOUS STORY

NEXT STORY →

Related Stories

Sponsored Stories

Powered by **Outbrain**

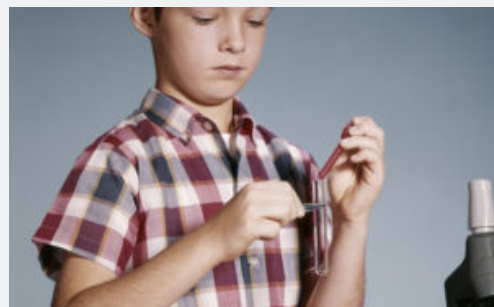
Today on Ars



How the FCC solves consumer problems—well, it doesn't, really



Google will offer checking accounts, says it won't sell the data



Scandal of kids posing as researchers continues to grow in South Korea



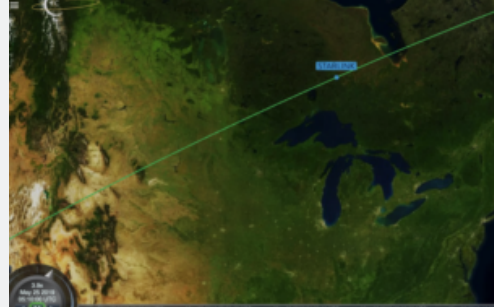
Stadia launch dev: Game makers are worried "Google is just going to cancel it"



Google: You can trust us with the medical data you didn't know we already had [Updated]



Russian man charged with running money-back-guaranteed criminal marketplace



How to spot the SpaceX Starlink satellite train overhead this week



Pokémon Sword and Shield review: A big adventure with a small Pokédex

STORE
SUBSCRIBE
ABOUT US
RSS FEEDS
VIEW MOBILE SITE

CONTACT US
STAFF
ADVERTISE WITH US
REPRINTS



NEWSLETTER SIGNUP

Join the Ars Orbital Transmission mailing list to get weekly updates delivered to your inbox.

SIGN ME UP →

CONDÉ NAST

CNMM Collection
WIRED Media Group
© 2019 Condé Nast. All rights reserved. Use of and/or registration on any portion of this site constitutes acceptance of our [User Agreement](#) (updated 5/25/18) and [Privacy Policy and Cookie Statement](#) (updated 5/25/18) and [Ars Technica Addendum](#) (effective 8/21/2018). Ars may earn compensation on sales from links on this site. [Read our affiliate link policy.](#)
[Your California Privacy Rights](#)
The material on this site may not be reproduced, distributed, transmitted, cached or otherwise used, except with the prior written permission of Condé Nast.
[Ad Choices](#)